

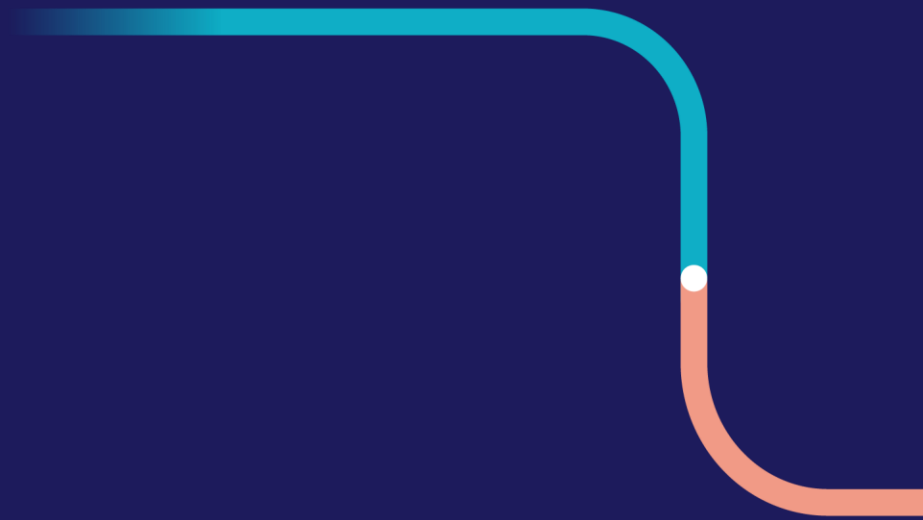


# TUMI E-Bus Mission

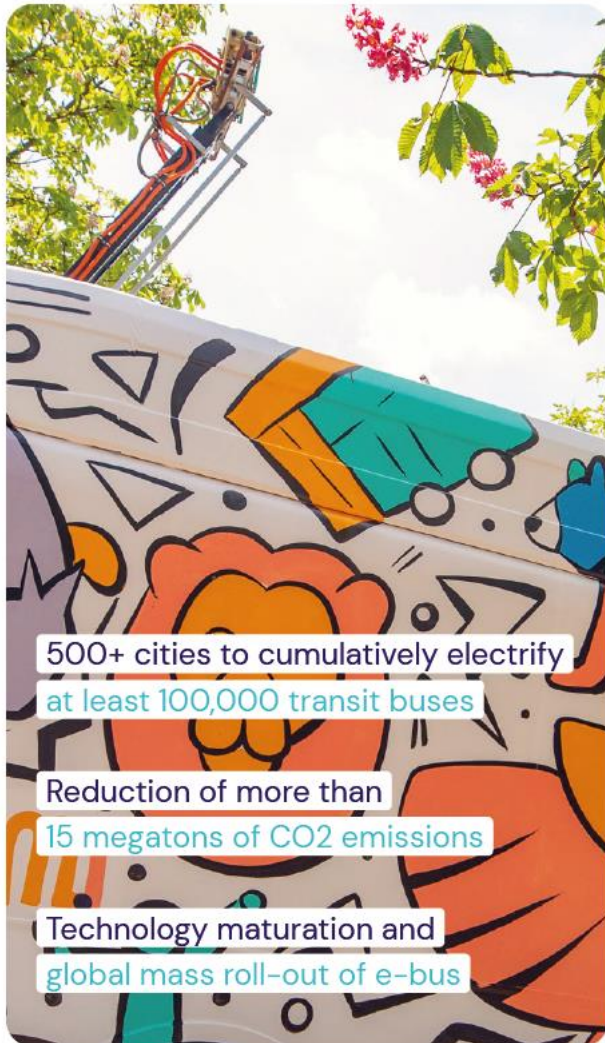
How to bring 100k e-buses to the streets of cities around the globe?

24.10.2022

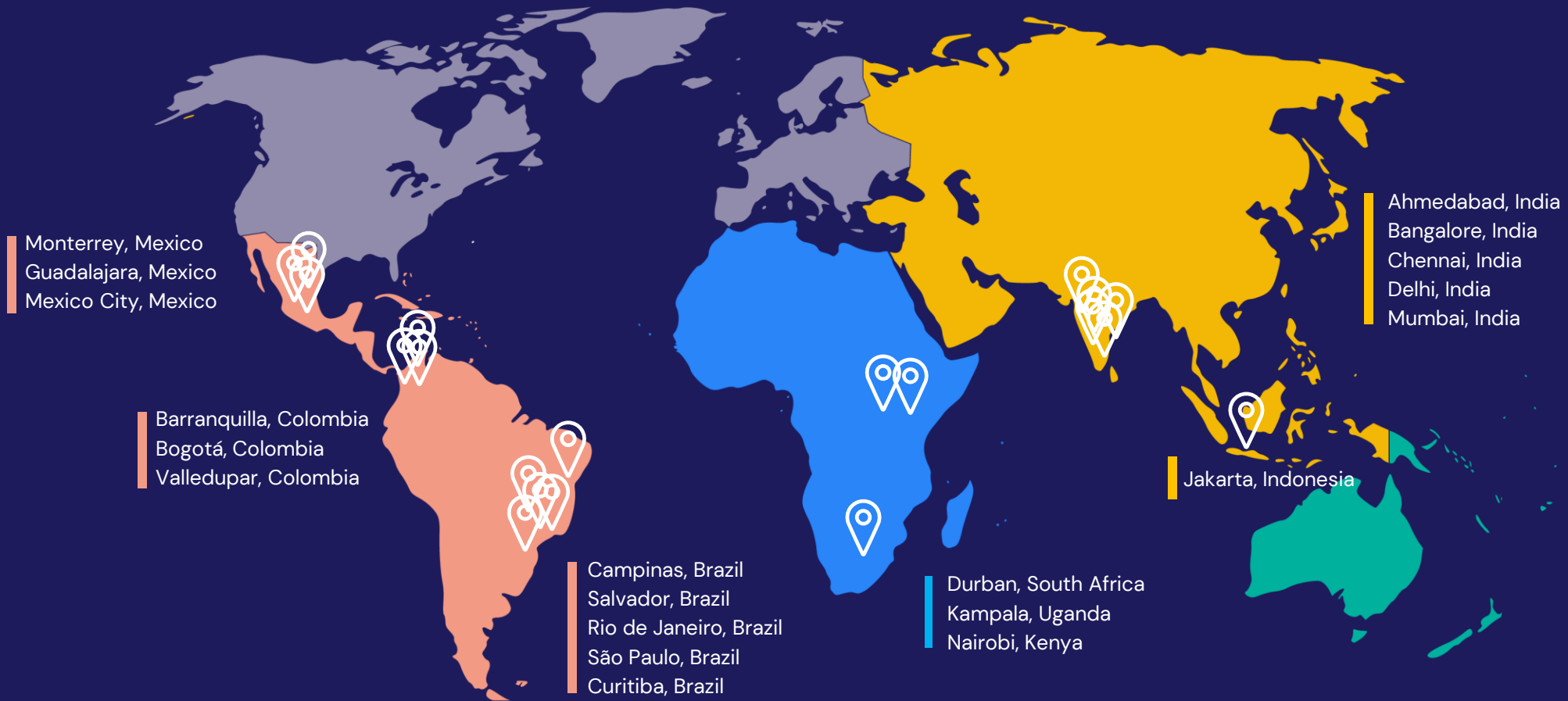
Dr. Jens Giersdorf | TUMI Management Head



# Objective and partners



# TUMI E-Bus Mission Deep Dive Cities



# Global Community of Practice

## 3 Pillars of the TUMI E-Bus Mission:

**1 Global and city specific coalition building**

Global community of practice of private & public sector partners

City-specific sub-coalitions to advance towards mass adoption of e-buses

## Explore #eBusMission on Twitter

TUMI #eBusMission City Network: ICLEI Regional City Dialogues

From India to Colombia, learn what are the main...

ICLEI Sustainable Mobility (@ecomobility\_) 8 days ago

Bicycle Mayor of Cape Town (@smavundla) 9 days ago

WRI INDIA

O site do @TUMInitiative foi atualizado!

Conheça a nova área de conhecimento compartilhado, no qual as organizações disponibilizam estudos e informações sobre eletromobilidade. #eBusMission

ITDP BRASIL (@ITDPBRASIL) 12 days ago

Dr. @OPagarWRI, CEO @WRIIndia shares his thoughts on the importance of innovative financing to revolutionize the electric buses for public transportation in India, on the sidelines of the recently concluded tw...

WRI Cities India (@WRICitiesIndia) 13 days ago

WRI Cities India (@WRICitiesIndia) 12 days ago

Digitalizing E-Bus Projects

An Exclusive Training Course for TUMI E-Bus Mission Partner Cities

17 October 2022 - 17 February 2023

Learn how to plan, procure and deliver improved operations efficiency of E-Bus projects with digital tools

- Fundamentals of IT Systems for IT
- System Design for Electric Buses
- Enhancing the Electric Bus

Our Mission Knowledge Hub Contact

Knowledge Hub

Topics Country Published by Format Language

Webinar 2022/09

Webinar on E-Bus Deployment - Market Dialogue Sessions: Banks and Financing Institutions

These online Market Dialogues aim at understanding the e-bus industry in Latin America: its market needs and barriers, the industry challenges and the financing and funding of e-buses...

ES, POR (Business Model)

Webinar 2022/09

Webinar on E-Bus Deployment - Market Dialogue Sessions: Manufacturers and OEMs

These online Market Dialogues aim at understanding the e-bus industry in Latin America: its market needs and barriers, the current regulatory frameworks and the industry challenges...

EN, POR (Operations) (Policy and Regulatory)

Publication 2022/09

Laporan Evaluasi Aksesibilitas Bus Listrik Transjakarta

ITDP Indonesia conducts a series of analysis processes and involves community groups to identify the various needs of priority groups, starting from the literature study process, FGD (Focus Group Discussion), interviews, and a trial survey of the electric bus fleet...

Planning

Publication 2022/09

Jakarta's TUMI #eBusMission Series September Issue

Through the 'Jakarta's TUMI #eBusMission' series, which will be released regularly, you can see the progress of efforts and the latest news regarding bus electrification in Jakarta and Indonesia...

EN (Operations)

Publication 2022/09

Panorama de la producción

Publication 2022/09

Electrification of heavy-

Publication 2022/09

Financing options for zero-

Publication 2022/09

Understanding zero-

<https://ebus.transformative-mobility.org/>

# Technical assistance for deep dive cities


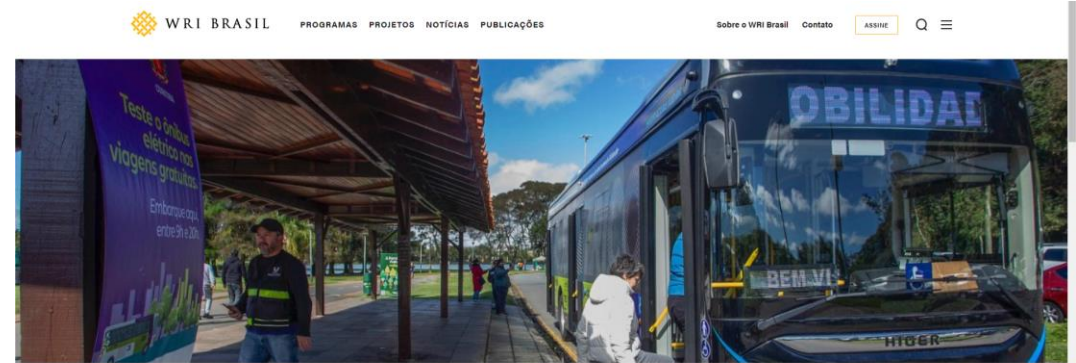
## 2 Roadmaps and technical assistance for the deep dive cities

Definition of timebound, ambitious and achievable e-bus targets

Strategic e-bus acceleration work plans and tailored technical assistance

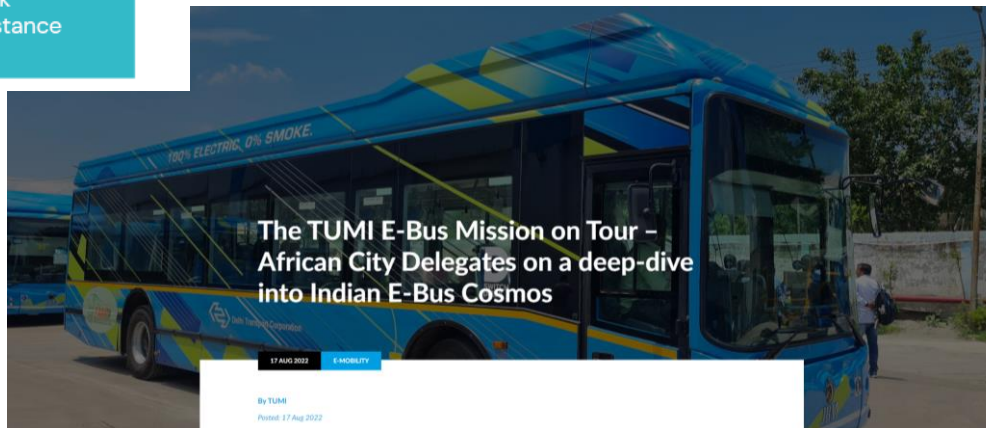
Seguimiento Operacional a Vehículos Eléctricos en la Ciudad de Bogotá D.C.

Oscar Delgado, Helmer Acevedo  
Zero Emission Fleet Center  
25/08/2021  
Bogota D.C.

### Curitiba realiza demonstração de ônibus elétrico para a população

22 Set 2022 Foto: Ricardo Marajó/SMCS



By TUMI  
Period: 17 Aug 2022

**THE GRAND CHALLENGE TENDER CONDITIONS**  
for Delhi, Bengaluru, Hyderabad, Kolkata and Surat



Contract Period  
**12 years**

Annual Assured Operational  
**70,000 kms per bus**



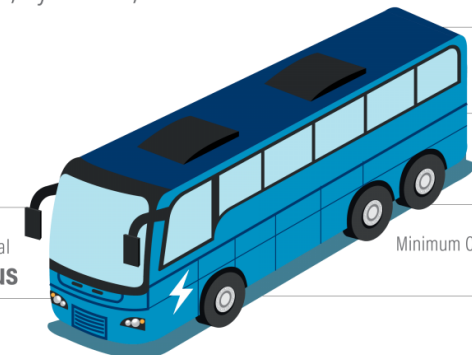
Charging Type

**Opportunity charging & overnight charging at depot**

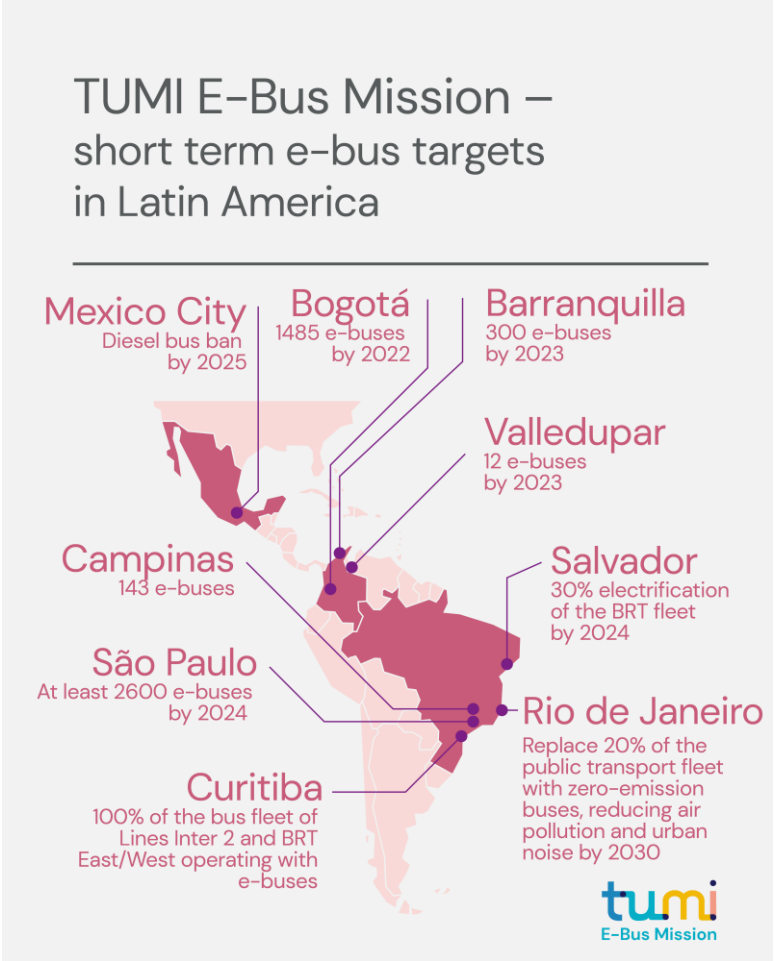
Bus Utilisation per day  
**225 kms + 10%**

Opportunity Charging Time  
**60 mins at depot**

Minimum Operational Kms in Single charge  
**200 kms**



# Short and long-term e-bus targets in LATAM (selected cities)



# E-Bus Commitment Monitoring



Many global cities are setting subnational targets to achieve transportation electrification goals. By 2030, cities in Africa, Latin America, Southeast Asia, and the Pacific are committed to as many as 10,000 buses.  
1 of 3

## Electric Bus Commitments Before 2030



Targets set by deep-dive cities from now to 2030

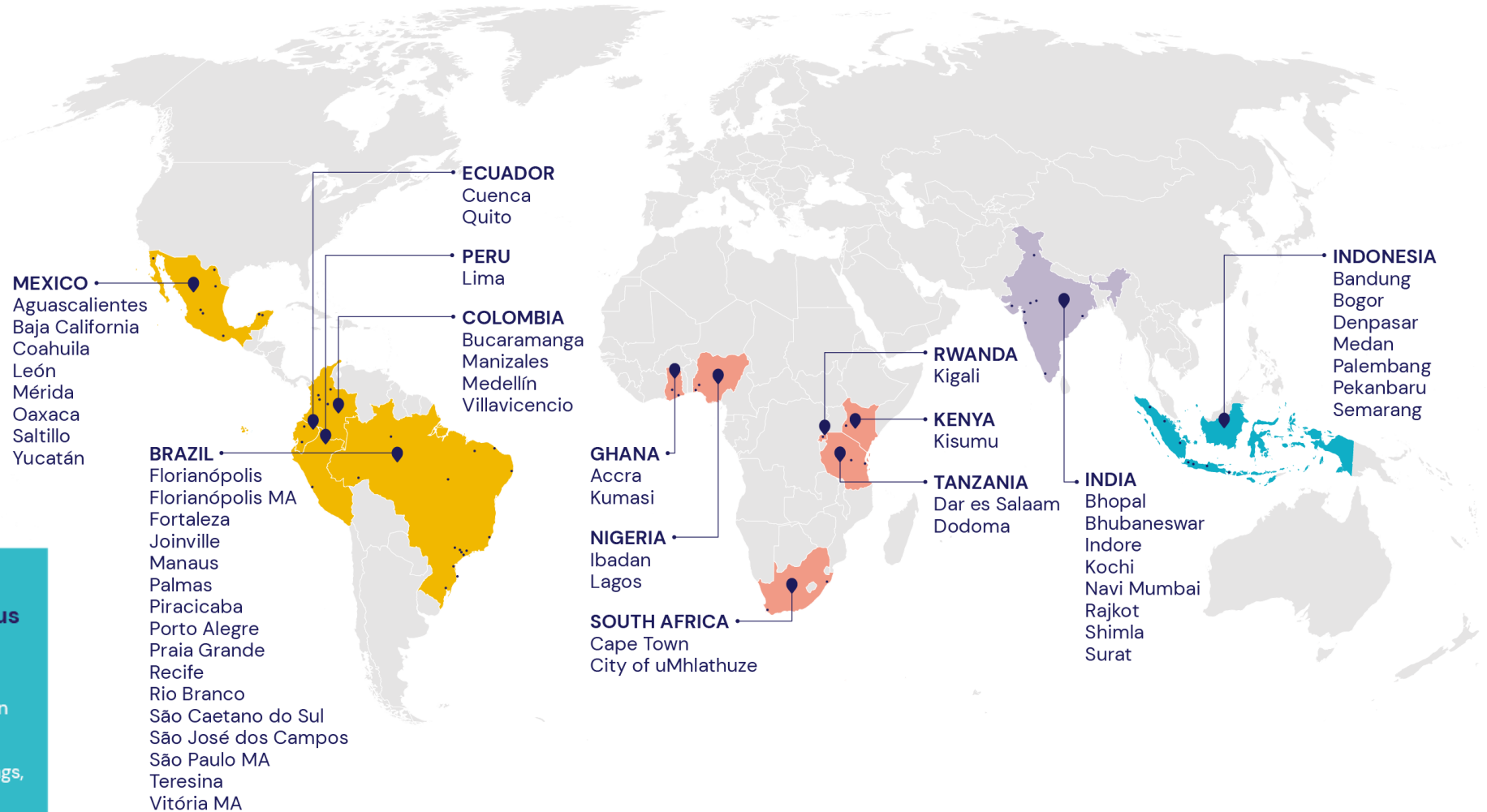
Number of E-buses 500  1000  Set target?  Yes  No



Source: TUMI E-Bus Mission • Map Created by World Resources Institute  
Note: some cities are still finalizing their electric bus commitments.



# TUMI City Networks



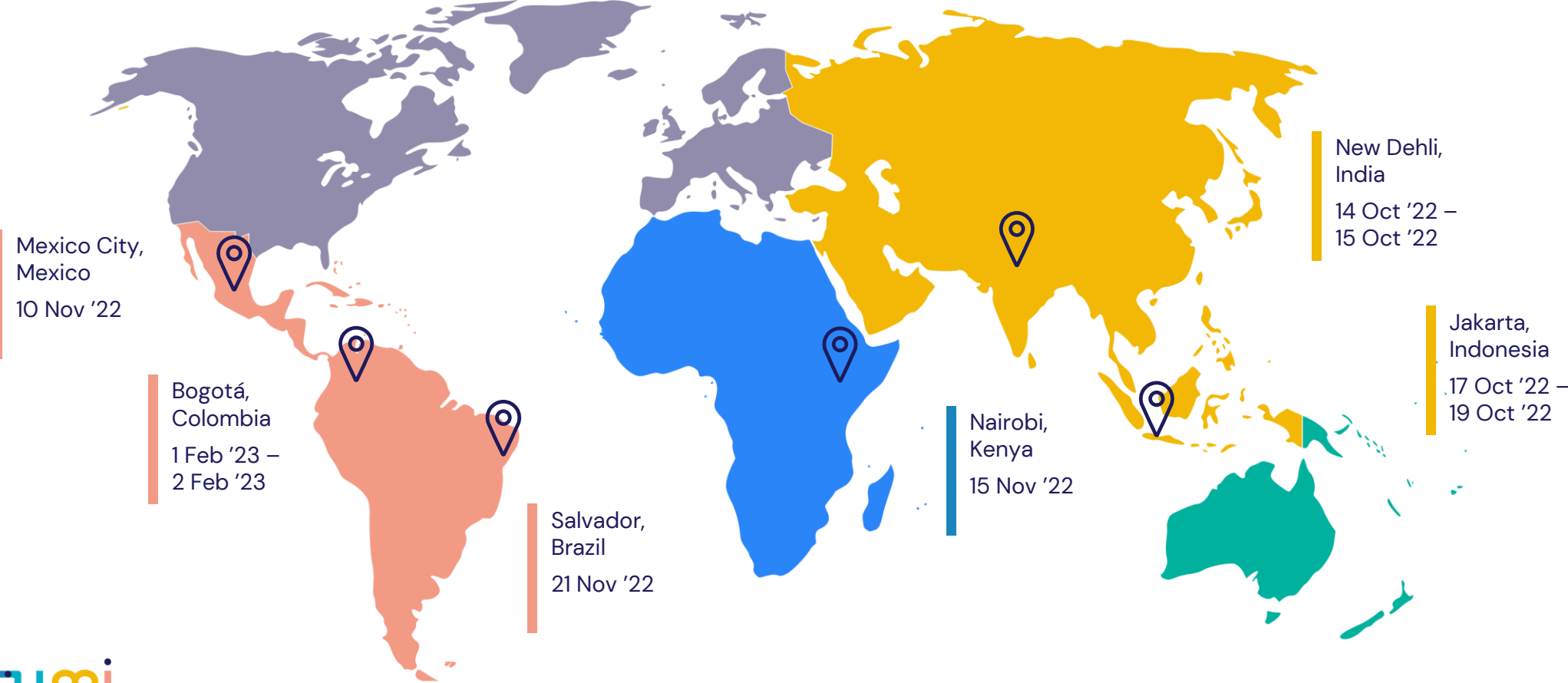
**3 Upscaling and dissemination in the TUMI E-Bus Mission City Network**

Peer-to-peer exchange between 20 deep dive cities and 100 mentee cities in the TUMI E-Bus Mission Cities Network

Global Knowledge Hub and online trainings, webinars, study tours and workshops



# TUMI E-Bus Mission City Network On Tour



# Revision of studies and tender documents

- Short-term requests (revision of tender documents)
  - Florianópolis, Brazil
- Requests for feasibility studies and strategies
  - Yucatán, Mexico
  - Pasto, Colombia





# Digitalizing E-Bus Projects

An E-Course by TUMI E-Bus Mission

From 17 October 2022  
to 17 February 2023

Learn how to plan, procure and achieve improved operations efficiency of E-Bus projects with digital tools

6

Modules

3

Virtual  
Study Tours

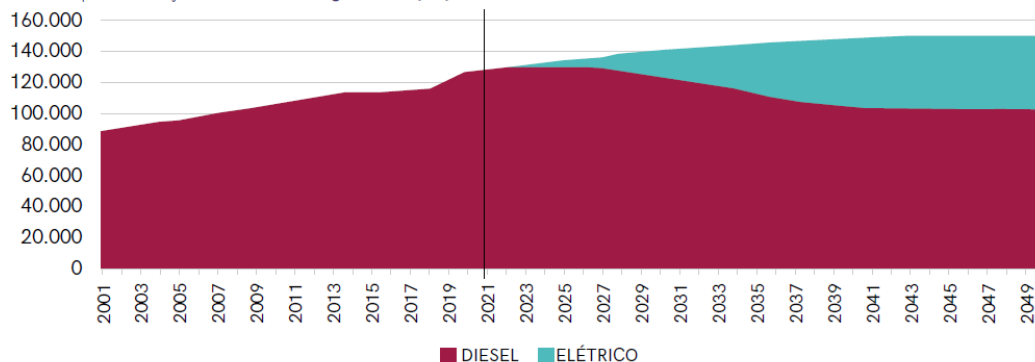
3

Languages  
EN, ES, PT



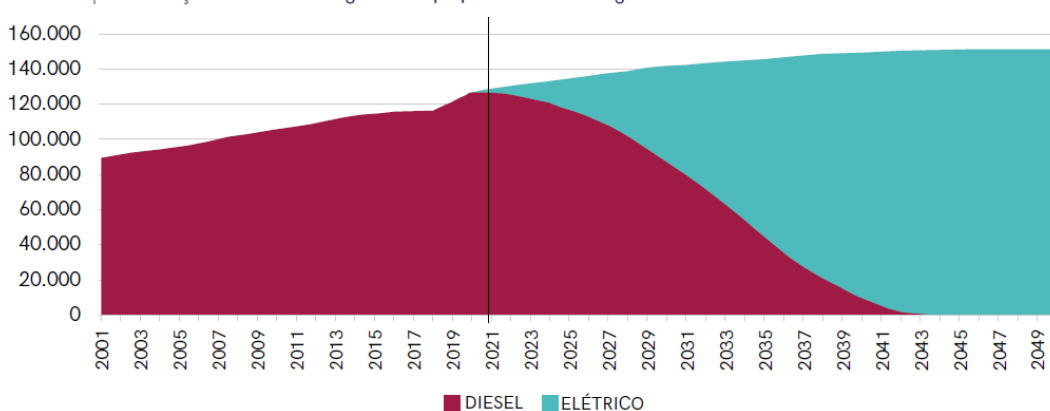
# The role of national policies

Gráfico 5 | Eletrificação da frota ao longo do tempo para o cenário Business as Usual



Elaboração: Addax

Gráfico 14 | Eletrificação da frota ao longo do tempo para o cenário Regulatório Nacional



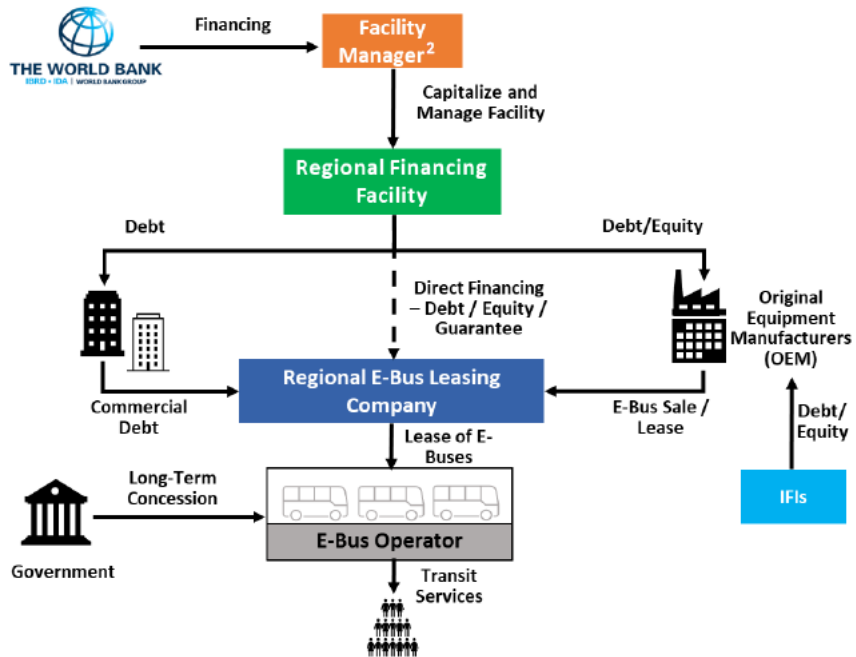
Elaboração: Addax

Fonte: Plataforma Nacional de Mobilidade Elétrica (PNME) 2022

- Scenarios for e-bus adoption in Brazil considering business-as-usual and regulatory policies
- National policies have a large influence on up-scaling electric bus implementation
- Financial system, business models, etc. make countries/cities more or less interesting for development banks and investors

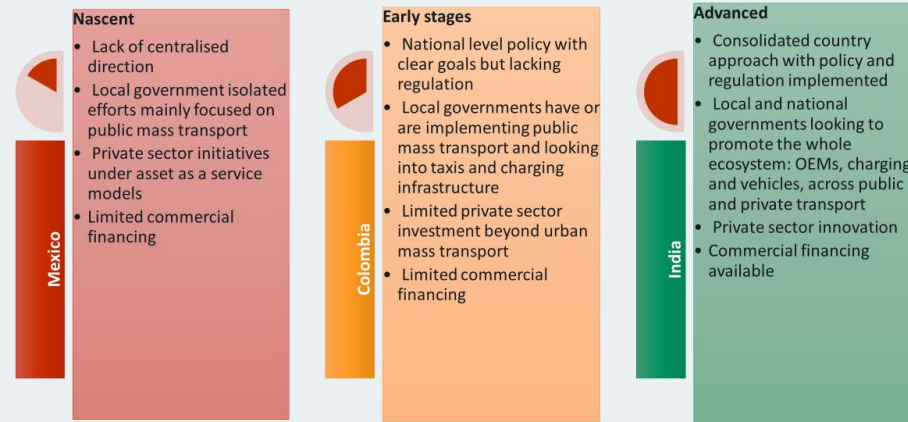
# Readiness level of countries and dedicated financial facilities

## Example of a potential transport sub-sector-level facility focused on bus fleet acquisition/renewal<sup>1</sup>



## Country dossiers – opportunity pipeline | Overview

Range of development stages across the three partner countries:



6 | Presentation date

steer



## Jens Giersdorf

Management Head

Transformative Urban Mobility Initiative (TUMI)

[jens.giersdorf@giz.de](mailto:jens.giersdorf@giz.de)

+49 6196 79-7553