

**PASIG**  
**TRANSPORT**



# Pasig Case Study: Charging Pods Experience & EV Status

2022 SOLUTIONSplus Pasig Training on E-mobility

06 December 2022



## Pasig City EV Charging Station

### Mega Parking 2


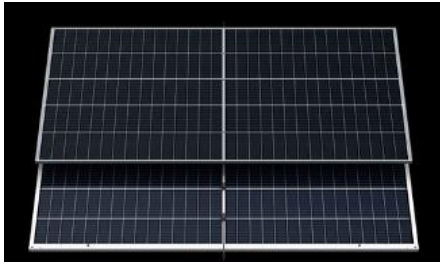
4 units of coin-operated 4.4 kW 200V electric vehicle power charging pods

1 set of 12kW Solar Grid Tie System  
(est. 1440kWh per month)



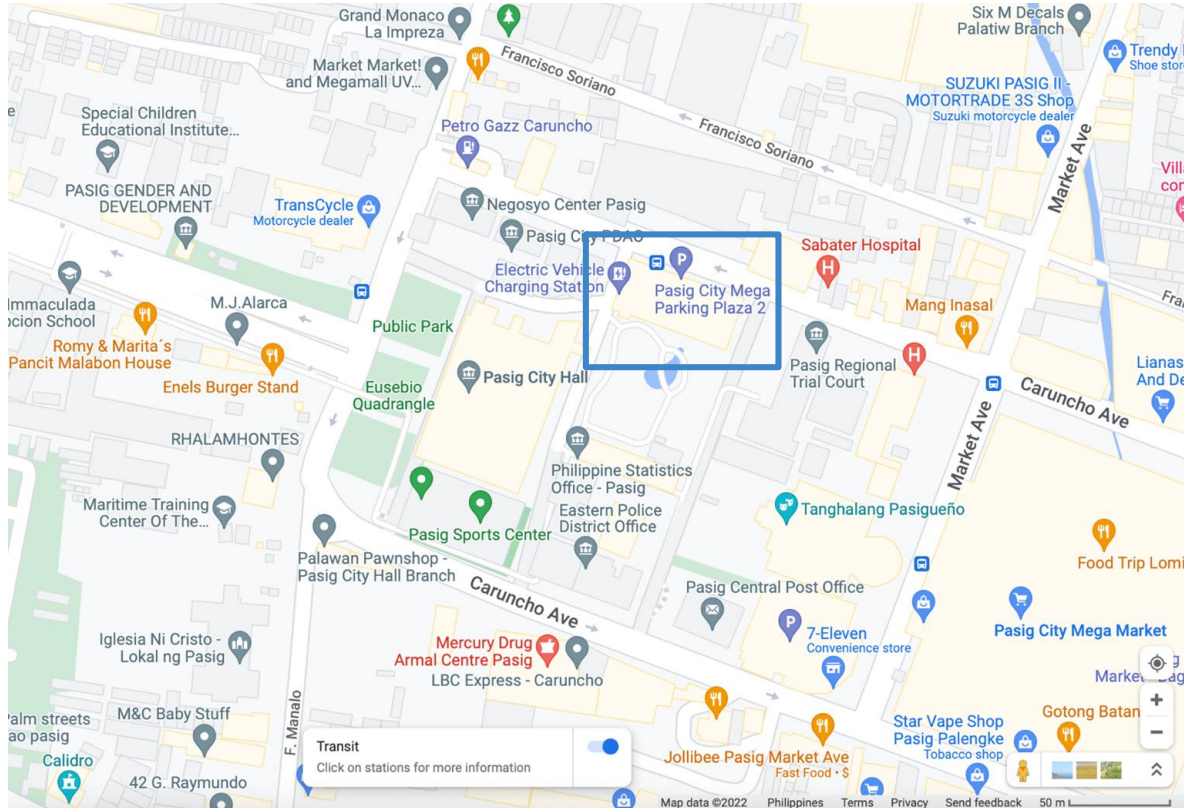
The EV charging station pilot is part of the project entitled

“Integrating Electric 2- and 3-Wheelers into  
Public Transport Systems in Southeast Asia”

EV charging solution	Image	Specifications
<b>Coin-operated Charging Pod</b>	(4 units) 	<ul style="list-style-type: none"> <li>• Kw 220V EV CHARGING TOWER (Power Charging Station)</li> <li>• 2 slots Electronic Keypad with Timer (up to 99 min)</li> <li>• 2.2 Kw per Outlet maximum of 20A per Outlet</li> <li>• With Programmable Timer (2 timer per tower)</li> <li>• 20A Aircon Outlet slot (2 outlet per tower) with OMNI WP Cover</li> <li>• With Digital Power Monitor (2 digital power monitor)</li> </ul>
<b>Solar Grid Tie System</b>	(1 set comprised of 12 panels) 	<ul style="list-style-type: none"> <li>• 500Q 2187 x 1102 x 35mm</li> <li>• 26.50kg</li> <li>• 500 Peak Power Watts</li> <li>• 42.8 Maximum Power Voltage</li> <li>• 11.69 Maximum Power Current</li> <li>• 51.7 Open Circuit Voltage</li> <li>• 12.28 Short Circuit Current</li> <li>• 20.7% Module Efficiency</li> </ul>

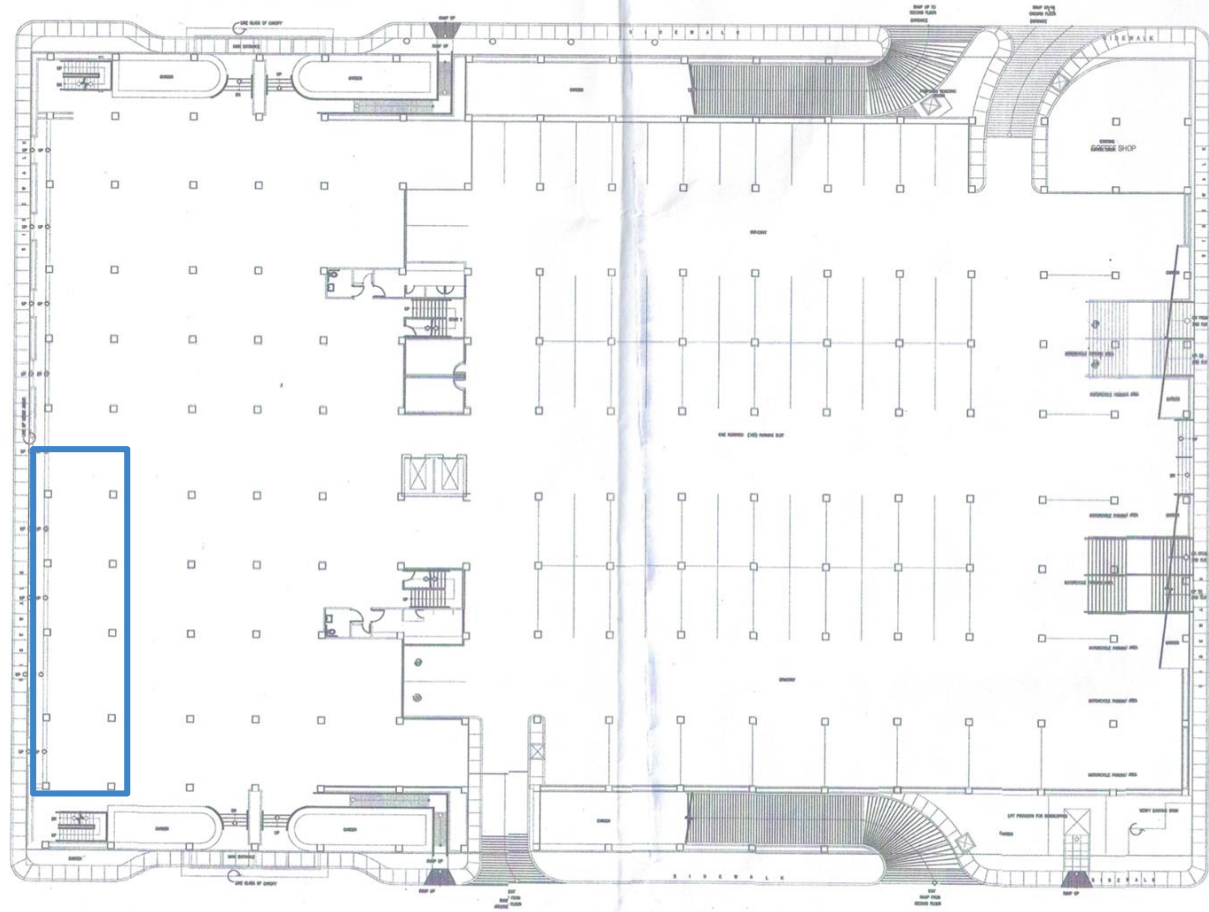
## Technical specs

# Ocular inspection



JUSTICE HALL

747



GROUND FLOOR PLAN  
ELECTRICAL LAYOUT

MEGA PARKING



# Construction and installation









# EV Charging Station Launch:

04 July 2022



# LESSONS LEARNED



- Ensure that building where the solar grid tie system will be installed has an electric building plan.
- Flood-proofing the charging pods through pedestal support construction
- Plans for a payment fee for charging the pods is a determinant to the type or technical model of the charging pods.
- Wiring plan and costing need to be elaborated at the onset of planning.
- Ensure availability of a proper power source (and submeter) in the building site where the charging pods will be installed.
- Energy submeter in the pilot was not pursued but it is recommended in the future where the charging solutions will scale-up in the city.



*Pasig City!*

# CHARGING PODS EXPERIENCE AND EV STATUS

MS. DOROTHY MAE C. DUMAWAL  
Focal Person E-trike Program  
CTDMO



# RECIPIENTS

**LGU-OFFICES  
PASIG HEALTH AIDE CENTER  
SENIOR CITIZEN SERVICE  
BARANGAY SERVICE**

**TOTAL OF 200 UNITS**



# Challenges

- Driver's Training
- Proper maintenance
- Batteries
- Charging Station



# Donated by Department of Energy

## RECIPIENTS

- Pasig LGU
- Home Owners Association
- Public Schools
- 20 Toda with Franchise
- Winners at Toda Summit



ELECTRIC VEHICLE - BEMAC

# 200 UNITS





# OCCULAR CHARGING STATION TO DIFFERENT LGU

BORACAY



VALENZUELA CITY



MANDALUYONG CITY



MANILA CITY



## Contact Us

*We're on Social Media!*



*PasigTransport@pasigcity.gov.ph*